



# VIKAS INDUSTRIES

A GOVT. OF INDIA RECOGNISED STAR EXPORT HOUSE

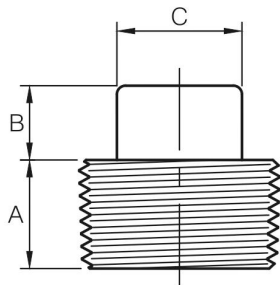


AN ISO 9001: 2015 CERTIFIED COMPANY

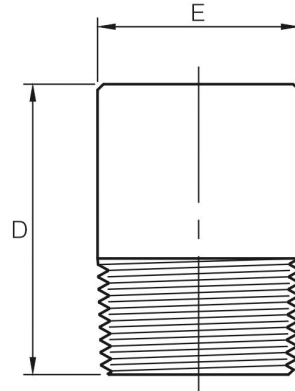
A UL LISTED COMPANY

## SQUARE HEAD & ROUND HEAD PLUG

ASME B16.11-2016 (Revision of ASME B16.11-2011)



Dimensions are in millimeters.



Dimensions are in millimeters.

Square Head Plug				
DN	Nom. Pipe Size	A (Min)	B (Min)	C (Min)
6	1/8	10	6	7.15
8	1/4	11	6	9.55
10	3/8	13	8	11.11
15	1/2	14	10	14.29
20	3/4	16	11	15.88
25	1	19	13	20.64
32	1-1/4	21	14	23.81
40	1-1/2	21	16	28.58
50	2	22	18	33.27
65	2-1/2	27	19	38.10
80	3	28	21	42.86
100	4	32	25	63.50

Round Head Plug			
DN	Nom. Pipe Size	E (Nom)	D (Min)
6	1/8	10	35
8	1/4	14	41
10	3/8	18	41
15	1/2	21	44
20	3/4	27	44
25	1	33	51
32	1-1/4	43	51
40	1-1/2	48	51
50	2	60	64
65	2-1/2	73	70
80	3	89	70
100	4	114	76

ASME B16.11-2016

### DIMENSIONAL TOLERANCE OF ASME B16.11

Unit : mm

Item	Type of pipe fitting	Size				
		DN	6 to 8	10 to 20	25 to 50	65 to 100
		NPS	1/8 to 1/4	3/8 to 3/4	1 to 2	2-1/2 to 4
Bore diameter of socket (B)	All types of pipe fittings		+0.4	+0.4	+0.4	+0.5
Bore diameter of fitting (D)			-0.0	-0.0	-0.0	-0.0
Concentricity of bore (X)			± 0.7	± 0.7	± 0.7	± 1.4
Coincidence of axes (Y)			± 0.8			
Center of bottom of socket (A)			1/200 Max			
Center of bottom of socket (A)	45° 90° Elbow Tee, Cross		±1.5	±1.5	± 2.0	± 2.5
Bottom to bottom of socket (E)	Full Coupling		±1.5	±3.0	±4.0	±5.0
Bottom to socket to opposite Face (F)	Half Coupling		±1.0	±1.5	±2.0	±2.5